



JOIN THE WORLD OF INTERNATIONAL PARTNERSHIPS



WELCOME

Are you ready to join the world of international school partnerships?

Session Outline

Introductions

Dream partnerships

The benefit and impact of partnerships

Examples of successful partnerships – mobility and virtual

An overseas perspective

Potential project opportunities with Poland, Spain and France

Mini workshop – planning for success

Spotlight on the International School Award

The Turing scheme and ISPS – Next steps





About us

International School Partnerships Scotland is a new network designed to support schools to re engage internationally, post Brexit, post pandemic. It combines a wealth of skills, knowledge and expertise in supporting schools and education professionals with their international ambitions.

LESLEY ATKINS

Lesley draws on many years' experience supporting schools in Glasgow with their international ambitions. This included working on the EU programmes as an assessor, as a successful applicant and as a mentor to countless projects.

- International Education Officer, Glasgow City Council (2012–22)
- Development Officer, International Education, Glasgow City Council (2009 – 12)
- British Council School Ambassador
- Turing Co-ordinator, LFEE



LIZ NEIL

Liz has over 20 years' experience working in international cultural relations, supporting global opportunities for learners, teachers and organisations across the UK.

As a Senior Consultant at British Council, Liz was involved in the design, implementation and evaluation of a range of opportunities including:

- Connecting Classrooms through Global Learning
- Erasmus+
- eTwinning
- Language Assistants
- IAESTE
- Various scholarship programmes

Liz has also worked as an assessor for the Welsh Government Taith scheme and the UK government Turing scheme



Benefits of International Partnerships



Benefits to Learners

- Contributes to enhancing reading, writing, and communication skills
- Boosts the performance of students who are not meeting their potential
- Cultivates skills essential for success in a global economy, and develops ICT skills
- Increases motivation for learning
- Fosters awareness and appreciation of diverse cultures and religions
- Develops global citizens who gain exposure to global perspectives and different worldviews.



Benefits to Teachers

- Offers a valuable avenue for professional growth and development
- Builds confidence in the classroom and nurtures leadership qualities
- Can positively impact student behaviour
- Provides access to global content and resources
- Exchange of best practise and teaching methodologies
- Encourages knowledge and understanding of countries and cultures
- Build confidence and develop language skills
- Provides exciting opportunities to meet professional standards



Benefits to Schools

- Helps narrow the performance gap among students
- Enhances the professional capacity of school staff
- Enlivens the curriculum and improves the overall school atmosphere
- Facilitates stronger connections with the local community and diverse partners
- Supports schools in meeting the standards set by inspection bodies
- Can raise the profile of the school and strengthen reputation



Benefits to Community

- Strengthens relationships between schools and parents
- Facilitates smoother transitions from primary to secondary education
- Encourages collaboration with local authorities and businesses
- Fosters tolerance and intercultural understanding within and across communities
- Promotes community cohesion and unity



WORKING WITH PARTNERS

- Finding the right partners
- Have open professional discussions
- Value yours and their expertise
- Respect both sets of priorities
- Select real priorities and curricula relevant to both
- There needs to be a strategic plan
- Staff are mentored and supported
- Learners are empowered
- Introduce creative international learning



SUSTAINING PROGRESS

- Keep calibrating change
- Continually evaluate
- Share with partners
- Mitigate risks
- Lead what works
- Let go of what doesn't work
- Implement international engagement across the curriculum
- Embed positive learning outcomes



CASE STUDY - MOBILITY

Elaine MacEachen
Headteacher
St Bernard's Primary School



CASE STUDY - VIRTUAL

**Lisa Hanna
Depute Director
SCILT**



PROJECT OPPORTUNITY

**Chris Sagan
Chairperson
Sikorski Polish Club**



OVERSEAS PERSPECTIVE

Mariola Hernandez
Managing Director
FECEVAL

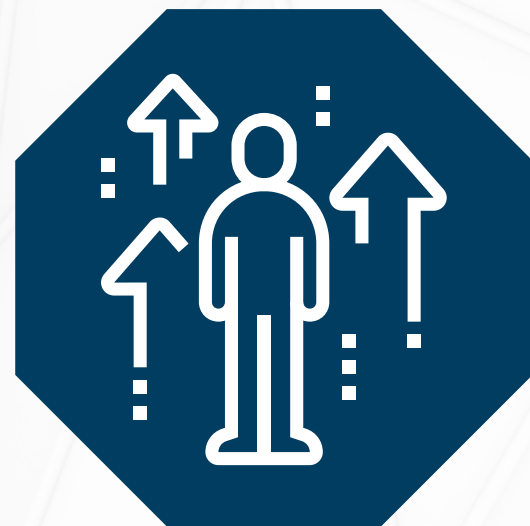
(Federation of Teaching Centers of Valencia)

fecerval

DISCUSSION GROUPS

Lets map the possibilities!

Form two groups – brainstorm themes and focus areas for potential partnerships (e.g., sustainability, cultural exchange). Also consider potential challenges and strategies to address them (e.g., time, funding, engagement).



**AREAS FOR
POTENTIAL**



**POTENTIAL
CHALLENGES**

THE TURING SCHEME

The UK's global programme to study and work abroad for schools, colleges and universities

International study and work placements

Aims to help education providers to give their students the opportunity to:

- develop their skills
- gain international experience
- boost their employability
- develop language skills
- gain a deeper understanding of other cultures

Aims – enhancing skills, advancing social justice, ensuring value for money



TURING SCHEME AIMS



ENHANCING SKILLS

- Career-building opportunities
- Deliver strong educational outcomes
- Develop hard and soft skills that employers look for
- Support academic or technical routes



ADVANCING SOCIAL JUSTICE

- Support social mobility
- Expand international opportunities
- Particularly for those who might not otherwise get the chance to study and work abroad
- Priority for disadvantaged and underrepresented groups and SEND / ASL.



VALUE FOR MONEY

- Demonstrate the use of funding effectively to enhance students' skills and improve their education outcomes.
- Efficient and effective use of funds
- Capability and capacity to deliver

Supporting other government priorities – encouraging international engagement, helping to forge new relationships, and enhancing existing relationships. See UK government's International Education Strategy

WHAT ISPS OFFER

We provide advice and support to organisations at all stages of their international journey. From making connections, finding a partner and securing funding and resources, to developing the skills to implement and sustain a meaningful partnership. We offer training, mentorship and support to help get the most out of the partnership. Our events provide the opportunity to learn and share with others, and be inspired.



**APPLICATION
SUPPORT**



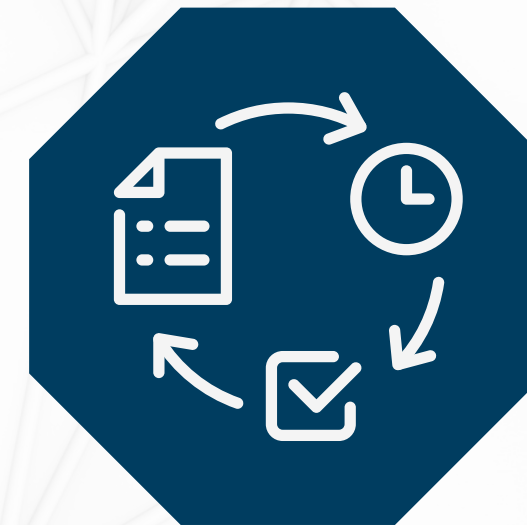
**PARTNER
FINDING**



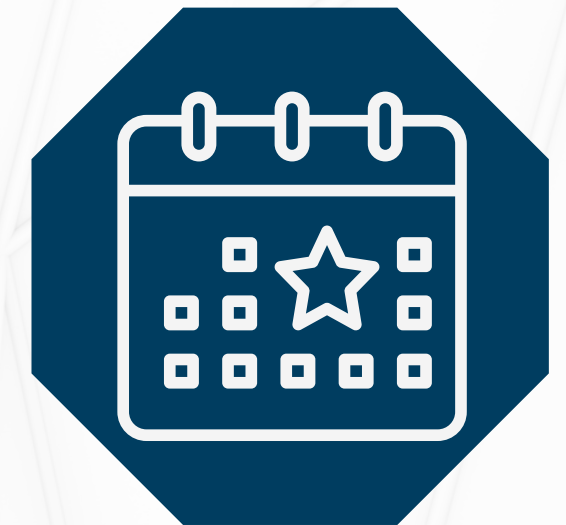
**TRAINING &
DEVELOPMENT**



MENTORING



**PROJECT
MANAGEMENT**



**EVENTS &
WEBINARS**

CONTACT US

If you have any questions, comments or queries, please don't hesitate to get in touch. We are based in Edinburgh and Glasgow and can be reached at:

-  **+44 (0) 7863164237**
-  **ISPScotland@outlook.com**
-  **www.ispscotland.com**
-  **@ISPScotland1**

